

Table of Contents

"FPrint Win 3.00" - HELP	2
How to install?	3
Working with FPrint WIN – Settings	7
File format	11
Commands and parameters	13
S - sale of an item :	13
E - sale of an item with departments:	14
T - end of receipt or payment:	15
C - discount/surcharge in percents:	16
P - print text:	16
I - official cash in and cash out of sums:	16
F - allows keyboard input:	16
H - forbids keyboard input:	17
Y - opening of official receipt:	17
Z - generates a daily financial report or cancels the fiscal receipt:	17
D - receipt duplicate :	17
B - beep command for ECR :	17
Working with FPrint WIN - running FPrintWIN from other applications	18
Fiscal devices setup	19
MP5000	19
MP-50	20
MP-55, MP55M, MP55L	22
DP-50, DP-50D	24
MP-500,MP-500T,MP-500TR	26
Samsung ER250F	28
Types of errors and order execution result	30
List of executable commands by devices	32
MP50, MP55	32
MP5000	34
MP500, MP500T, MP500TR	35
MP55M, DP-50, DP-50D	37
FP3530, FP550F, FP550F-40, FP300, FP300-Ke, FP1000	38
Samsung ER-250F	40
Contact information and technical support	41

"FPrint Win 3.00" - HELP

"FPrintWIN 3.00" is a program designed to manage sales from a text file to the electronic cash registers (ECR) MP5000, MP-500, MP-500TR, MP-50, MP-55, MP-55M, MP-55L, MP-55LD, DP-50, DP-50D, Samsung ER-250F and the fiscal printers (FP) FP3530, FP300, FP1000, FP550F and FP550F-40.

The program works in Windows 95/98/Me/NT/2000/XP environment.

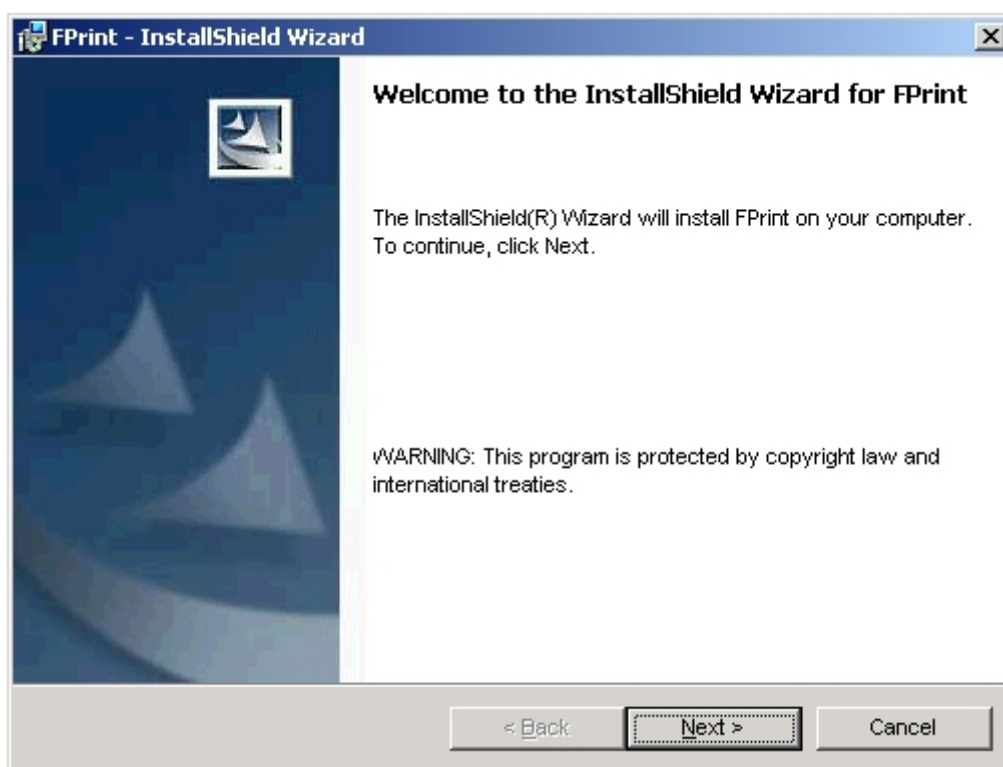
How to install?

The installation of "FPrintWin" is a simple procedure.

You can start the installation process from the disk or find the latest version of the program at:

ftp://FTP.DATECS.BG/PUBLISH/POS/CASH%20SOFTWARE/FPRINT_WIN/

In that case, after you download the "Install.exe" from Internet, extract the files in a directory of your choice. When file extraction finishes the installation of the program automatically starts up:

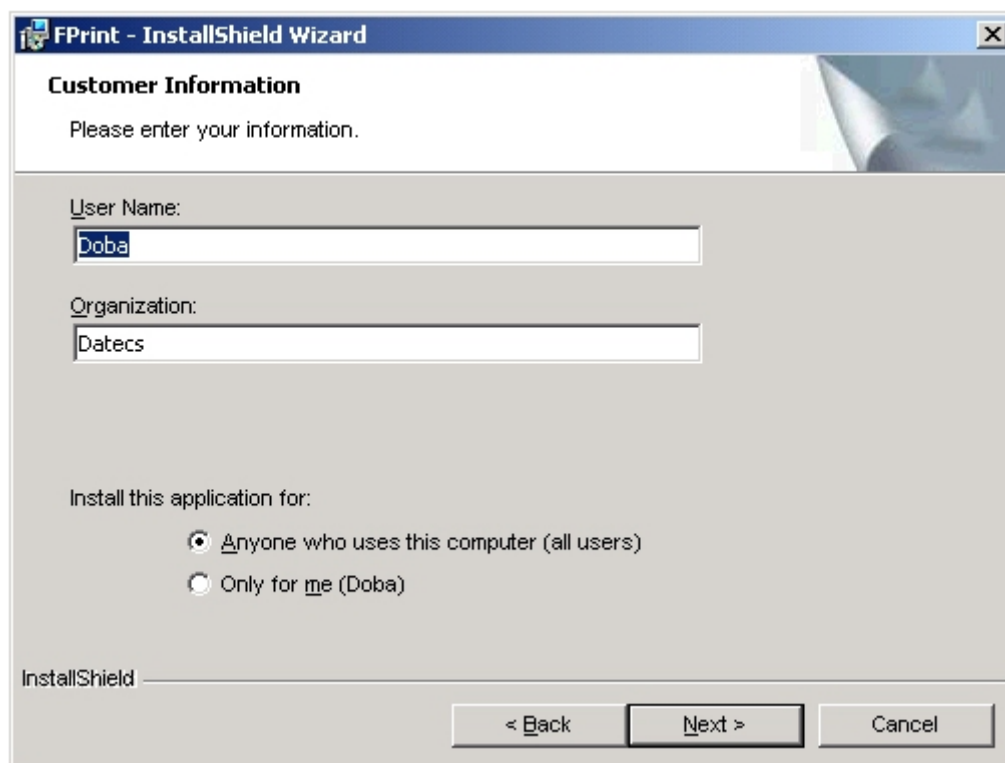


Press the "Next" button to pass on to the license agreement:

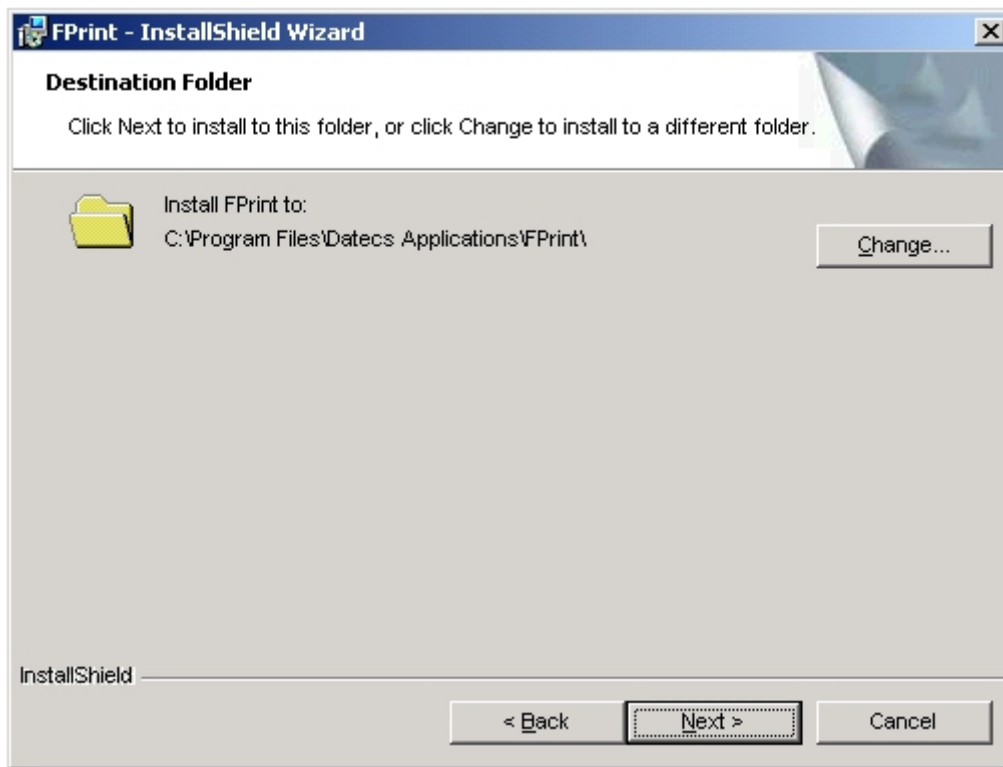


Please, read the license agreement carefully and if you agree with the conditions stated in it, choose " I accept the terms in the license agreement" and then click "Next".

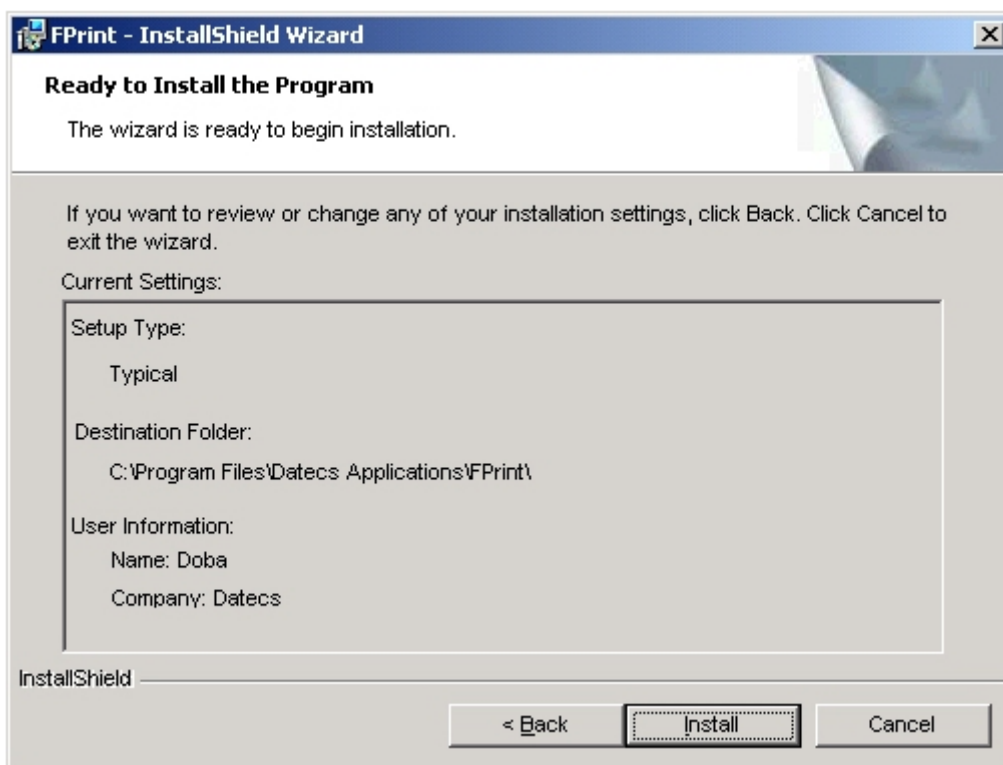
In the following window you can enter the user's name, the name of the company you work for, as well as decide who will have access to the program. Click "Next" to proceed.



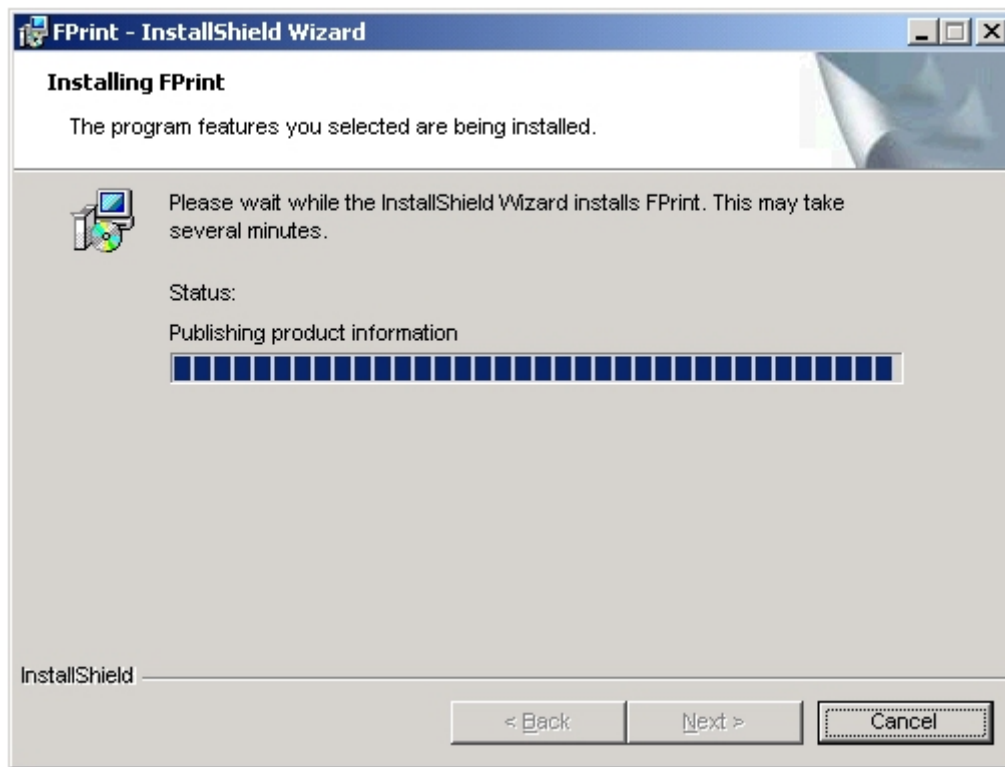
In the window that comes next you can easily click the "Next" button or decide on another place for the installation.



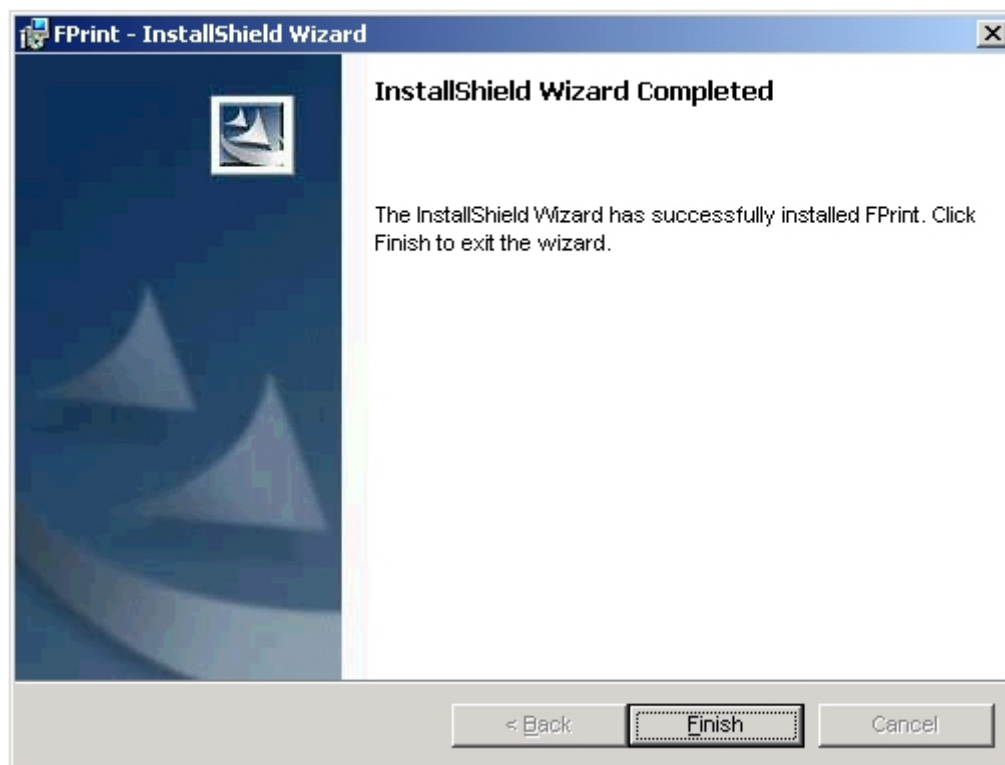
The final window provides you with information about what is being installed and in what folder. You can still go back with the "<Back" button or close the installation with "Cancel".



Pressing the "Install" button starts the installation of the program in the system.



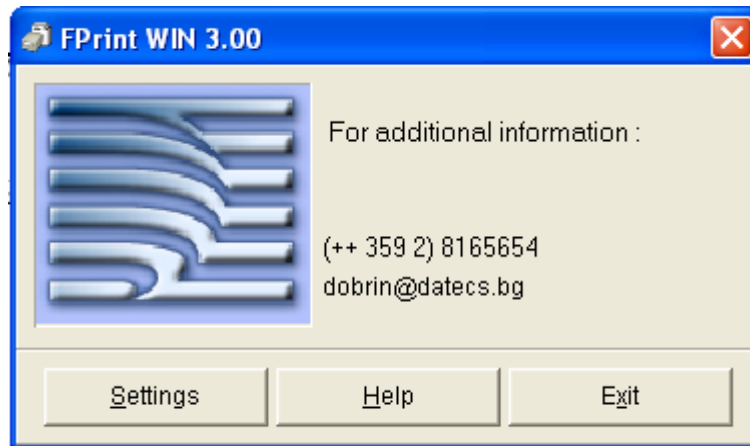
"FPrintWin" has been successfully installed - click "Finish".



Note: Installation under Win95 and Win98 may require system restart to continue.

Working with FPrint WIN – Settings

Run the program from Start>Programs>Datecs Applications and choose FPrint or go to the folder of the program ("C:\Program Files\Datecs Applications\FPrint") and click the FPrint.exe. This will open the main window:



The main window buttons are:

1. Settings - opens the window with the program settings;
2. Help - runs "FPrintWin" help;
3. Exit - exits the program;

Settings

Devices

- MP500TR-La
- MP5000
- MP5000M
- MP5000-Ro
- MP5000-Est
- MP5000-Mo
- MP50
- MP55
- MP55-Ro
- MP55L-Ro
- MP55LD-Ro
- MP55M
- MP56-Li
- MP55M-Yu
- MP55-Arm
- MP-55B
- DP-50
- DP-50D
- DP-50-Ro
- DP-50D-Ro
- DP-50-Ke
- FiscalPrinters
- FP 300
- FP 300-Ke
- FP 3530
- FP 550F
- FP 550F-40
- FP 550F-Ro
- FP 550F-Mo
- FP 550F-Yu
- FP 1000

COM port
Com 1

Baud rate
9600

Logical number
1

Serial number from device:
027440

Get serial number

Key
123123

Choose Language :

☐ Classical - (Ok;Er;Sd;No)

☐ Error number

☐ Answer in the same file

☐ DOS text

Default executable file :

Answer file :

☒ Resident mode

Executable file directory : C:\temp\execute

Executable file name : s.txt

Executable file options : Delete file


Answer file directory : C:\temp\answer

Answer file name : a.txt

Answer file options : Constant name

Save **Cancel** **Help**

1. Devices: Select the type of your device;
2. COM port: Select the COM port to which the device is being connected;
3. Baud rate: The baudrate (communication speed) must be the same as the one set in the ECR (see"Fiscal Devices Setup");
4. Logical number: You must enter the logical number of your device, if it has one;
5. Serial number: If it the device is a cash register, set the device in Sales Mode- put the key in "REG" position and log in as the respective operator.
6. Press the "Get serial number" button and the fiscal device with the respective settings will enter and save its serial number for you.
7. Key: Enter the registration key for this serial number;
8. "Answer in the same file" :If the box is not checked, you can save the answer of your order in another file chosen by you;

9. You can select default files for reading and saving by browsing with the  button ;(not in resident mode).

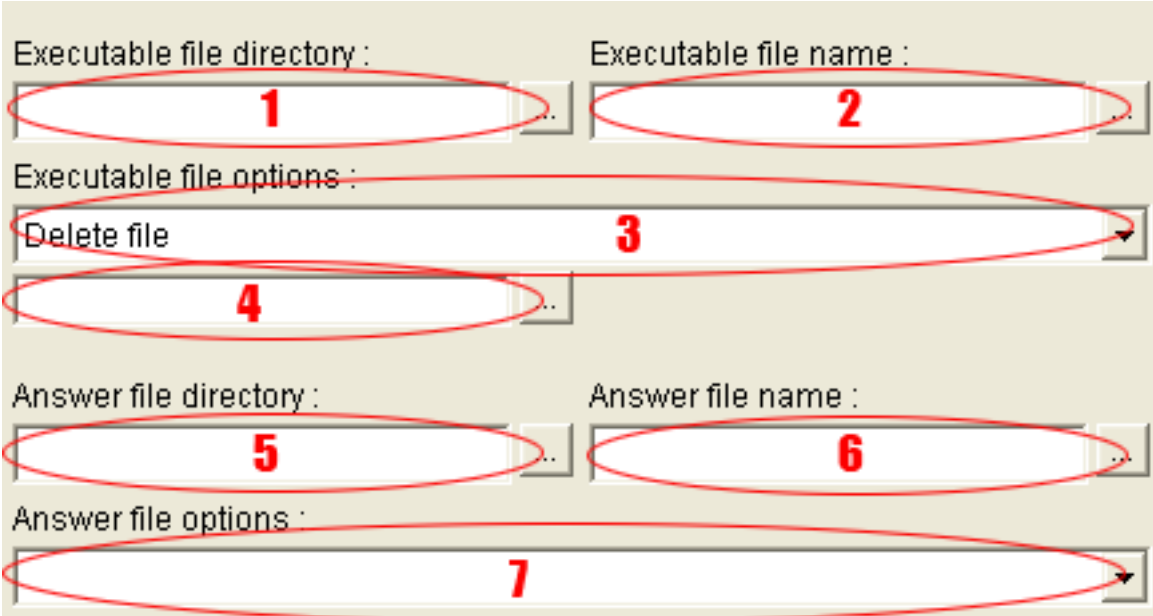
10. In case the program working with "FPrint WIN" has not set as a parameter the name of the order text file, "FPrint WIN" uses the default file and saves the answer in the file that has been selected for the "Answer file:" field. If the field contains no file path, "FPrint WIN" will search for the file in its own folder (the folder where "FPrint WIN" was installed);

11. The result of every text file command that is carried out can be saved in a service field (see "File Format")) in two different ways, depending in what you have marked for "Type of answer"(see "Types of Errors");

12. If your program generates DOS Cyrillic, you must check the "DOS text" box. The checkbox is not obligatory if you work with a fully Windows-based program.(Only for Bulgarian Edition)


13. New in version 3.00 is the option for resident mode.

This mode allows you to execute sells by copying a text file with a name of your choice or default name('sell_execute.txt') into a directory of your choice.



The screenshot shows the FPrint WIN interface with the following fields and options highlighted by red circles and numbers:


- 1**: Executable file directory (text field with browse button)
- 2**: Executable file name (text field with browse button)
- 3**: Executable file options (dropdown menu showing "Delete file")
- 4**: Directory for moving the file (text field with browse button, only visible if option 3 is "Move to directory")
- 5**: Answer file directory (text field with browse button)
- 6**: Answer file name (text field with browse button)
- 7**: Answer file options (dropdown menu)

1. Select directory (press ) and copy the file with sales here in order to execute it. OBLIGATORY FIELD.

2. Select name for the file with sales, which Fprint will try to execute(if no name is selected then Fprint tries to execute with default name - sell_execute.txt).

3. Select whether to delete the executable file after print('Delete file option') or rename and move it to another directory('Move to directory' option). OBLIGATORY FIELD.

4. If you've selected 'Move to directory' from option 3, here you can select directory where the printed file will be moved. Obligatory if option 3 is 'Move to directory'.

5. Select directory for the answer file(press ). OBLIGATORY FIELD.

6. Select name for the answer file (if no name is selected then default name is sell_answer.txt).

7. Select whether you will have only one answer file('Constant name' option) or after each finished bill Fprint will generate different answer file('Date time name' option).
OBLIGATORY FIELD.

To save all the settings for the current device, click "Save". You may choose to repeat the process for your backup fiscal device.

File format

The input file contains ASCII text commands. Each line consists of only one command. The commands' format is:

[command], [logical number], [service field];[parameters]

[command]: this field contains one of the following letters: S, T, P, C, I, H, F, Y, D, Z, B;

[logical number]: this is the number saved in table 2, field 1 of the ECR; for FP the field is irrelevant, allowed value is 0~99;

[service field]: consists of 3 sub-fields, each divided by a comma. Every sub-field contains respectively 6, 1 and 2 underlines.

_____?_?_____

In this field FPRINT records the result of the respective command execution. In the first 6-lined field, what is recorded is the ECR or FP serial number. The second 1-line field saves an index from 0 to 9, whose value increases with each successful command. The last 2-lined field indicates whether and how a command has been carried out in the following format:

___ - unprocessed record ;

Depending on what type of answer you have chosen when setting the program (see Settings), the result is either saved in a DOS "FprintWin" compatible format (classical answer) or what is recorded is the error number, if such occurs.

Classical answer :

Er - the command has not been carried out due to an error in field [parameters] or invalid command sequence during work with FP (for example: S, T - payment without closing the receipt, S or S, C, C, or S, Z);

Ok - the command is successful;

Sd - the command has not been carried out; possible reasons: paper is out; the printer was turned off during print; there is a problem with the fiscal memory or the printing device; the FP clock is not set;

No - the respective ECR or FP does not execute this command (not considered as an error);

Error number/result :

0 -Command successful;

1 - Communication error! Make sure the device is working properly and check if it is connected to the computer;

2 - Incorrect command;

3 - The program cannot open COM port No

4 - There is no such device;

5 -Incorrect command syntax;

6 - Non-existent file;

7 - Wrong file structure;

8 - Please, enter the registration key;

9 - Please, enter all the parameters correctly;

10 - Unspecified error.

The numbers 0,1,2,5 and 10 are recorded in the file service field, and the rest can be displayed as program messages.

Commands and parameters

S - sale of an item :

S,[logical number],_____,_,_:[item];[price];[quantity];[stand];[item group];[tax group];0;0;

(Only for Serbian devices S,[logical number],_____,_,_:[PLU];[price];[quantity];;;;)

- * [item] is the name of the item(up to19 symbols for ECR and up to 20 for FP);
- * [price] is the price of a single item (0 ~ 999999.99 for ECR and -999999.99 ~ 99999.99 for FP; the negative price is used for voiding sales);
- * [quantity] is the quantity sold (a number 0 ~ 99999.999);

- * [stand] is the stand number (a number 1 ~ 9);
- * [item group] is the number of the item group (a number 1 ~ 99);
- * [tax group] is the tax group of the item (1 ~ 8 for ECR and 1 ~ 4 for FP);

FP will not carry out this command if:

- * the maximum number of sales (99) within a single receipt is already reached;
- * the sum by any of the tax groups is negative;
- * the sum of discounts and surcharges within the receipt is negative;

In each of the cases the result of executing the command will be"Er".

E - sale of an item with departments:

E,[logical number],_____,_,_:[item];[price];[quantity];[stand];[item group];[department number];0;0;

- * [item] is the name of the item(up to19 symbols for ECR and up to 20 for FP);
- * [price] is the price of a single item (0 ~ 999999.99 for ECR and -999999.99 ~ 99999.99 for FP; the negative price is used for voiding sales);
- * [quantity] is the quantity sold (a number 0 ~ 99999.999);
- * [stand] is the stand number (a number 1 ~ 9);
- * [item group] is the number of the item group (a number 1 ~ 99);
- * [department number] is the department number from 1 to 50;

FP will not carry out this command if:

- * the maximum number of sales (99) within a single receipt is already reached;
- * the sum by any of the department numbers is negative;
- * the sum of discounts and surcharges within the receipt is negative;

In each of the cases the result of executing the command will be"Er".

T - end of receipt or payment:

**** end of receipt:***

T,[logical number],_____,_,_;

Payment in cash is made for the whole sum, together with closure of the fiscal receipt. With MP-50 and MP-55 this command also closes an official receipt.

**** payment:***

T,[logical number],_____,_,_;[code];[sum];;;;

* [code] is the payment code: 0,1,2,3, or 4; numbers from 0 to 3 correspond to payment in cash, on credit, check and credit card payment;

subtotal is calculated with 4;(For Serbian devices - [code] with value 0 do not work)

* [sum] is the sum to be paid;

Payment is made with the indicated sum and payment type, and if the paid sum is larger than the sum due for payment, the receipt is closed. Unless this happens, what can be executed are only this command and the print text command. When a discount/surcharge must be made on the sum accumulated to the moment (subtotal), the command is sent for with code 4.

C - discount/surcharge in percents:

C,[logical number],_____,_,_;[type];[percent];;;;

* [type] - one number with a value 0 (surcharge) or 1 (discount);

* [percent] - the value of the surcharge/discount in percents (0 ~99.99);

If prior to this command a payment is made with parameter 4, a discount/surcharge will be made on the subtotal. Otherwise, the discount/surcharge is made on the sum of the last sale. MP-50 and MP-55 carry out a discount/surcharge on subtotal only. With the FPs this command cannot be executed more than once on one and the same sale or subtotal. In this case, FprintWin will do only the first discount/surcharge and will stop whenever it meets an invalid C command.

P - print text:

P,[logical number],_____,_,_;[line 1];[line 2];[line 3];[line 4];[line 5];

If the line is empty, it is not printed out. If it contains only spaces, it will be printed as an empty line. MP-50 and MP-55 print out only the first line. The maximum number of symbols per line is 24 for ECR and 30 for FP.

I - official cash in and cash out of sums:

I,[logical number],_____,_,_;[type];[sum];;;;

* [type] is 1 number with a 0 value (cash in) or 1 (cash out);

* [sum] is the sum to be cashed in/cashed out;

F - allows keyboard input:

F,[logical number],_____,_,_;

H - forbids keyboard input:

H,[logical number],_____,_,_;

Y - opening of official receipt:

Y,[logical number],_____,_,_;[line 1]; [line 2];[line 3]; line 4]; line 5];

An official receipt is opened and only the first line is printed. In the official receipt what can be carried out is only the P command (printing of text) and the T command (closing the official receipt).

Z - generates a daily financial report or cancels the fiscal receipt:

Z,[logical number],_____,_,_;

Generates a daily financial report with clear for FPs.

Cancels the entire fiscal receipt for ECR MP56 (Lietuva). The cancel command is performed if:

- there is an open fiscal receipt
- there was no %- / %+ on subtotal
- payment has not started

For fiscal printers, the financial report must be preceded by electronic journal erase. Therefor the „Z“ command muse a single line in the file that you execute with FPrint.

D - receipt duplicate :

D,[logical number],_____,_,_;

B - beep command for ECR :

B,[logical number],_____,_,_;

Working with FPrint WIN - running FPrintWIN from other applications

The program can be started with the following parameters:

FPRINT [port] [speed] [file] (serial number)

[port] - set the number of the serial port to which is connected the respective ECR/FP (for example COM 1 or 1). If you don't set this parameter, the default port is the one you selected in the program settings for the device.

[speed] - this field must contain the communication speed set in the ECR/FP. If you do not set this parameter, the default speed is the one set in the program settings (baud rate) for the device.

[file] - the field contains the name of the input (executable) file. The default file is the one set in the program settings for the device.

Field **(serial number)** contains the serial number of the fiscal device. In case the computer needs to control more than one fiscal device, You must enter the fourth parameter. If it is entered, You must enter all previous parameters!

If you control more then one fiscal device, but enter from 1st to 3rd parameter the program will execute the file onto the last registered device.

To execute the order, you must start "FPrint WIN", while using it from your programs, with at least one parameter. Otherwise, if you start the program with no parameter, you get the opportunity to adjust the settings.

"FPrint WIN" is distributed along with a sample program("FPExample.exe"), as well as with sample files for each device. What you can see below is a typical example of executing an order from the command line or under DOS (you can create a BAT file and execute it).

```
C:\PROGRA~1\DATECS~1\FPrint\FPrint.exe COM2 9600  
C:\PROGRA~1\DATECS~1\FPrint\MP55_E~1.INP
```

Fiscal devices setup

MP5000



Allow "fiscal printer" mode:

In table 4, line 4 is recorded a key number which you can receive from DATECS. This is a single procedure! Thereafter the ECR can be used in "fiscal printer" mode;

Switching the cash register to "fiscal printer" mode:

From OIIP mode (after pressing the[+%) button twice), press the [.] button; the display shows [--FP-- 0]. Now the ECR is in "fiscal printer" mode and is ready to work with FPRINT. To exit the "fiscal printer" mode, click [MODE];

MP-50



To change the ECRs' configuration, first they need to be cleared.

Clear ECR:

Entering the "Clear" mode is done from "OFF" status after pressing the numeric key "3" and setting the operator's password from number 13 to number 16. Press "TOTAL". Then press "TOTAL" or the "PLC" and "1" buttons, which generates a printout of the electronic journal and daily financial report.

When the electronic journal is already printed, the operator must confirm the clear. The display shows a message "C - 0" - the operator should press the respective key. To confirm the clear, press the "0" key. Pressing "C" cancels the operation.

Programming the fields:

To enter the "Programming" (PGM) mode, set the device in "OFF" status and press the numeric key "4". Set the operator's password from number 15 to number 16 and press "TOTAL".

The programming of the memory is selected by pressing the "1" key. All the parameters that can be programmed are arranged in tables. Each table consists of a fixed number of lines and each line consists of fields.

2. 1. 1. 2.

[table number].[Line number].[Field number].[Number of symbols]

In the programming mode you can set all the parameters that are necessary for the cash register to work properly. With the help of the functional keys (according to their definition) you can go to a field and, using the information keys, set the wanted value. Press "TOTAL" to

save the data input.

Q'TY - go to the next table. After a table of the highest number follows a table of the smallest number.

%+ - go to a line of a higher number;

%- - go to a line of a smaller number;

PRC - go to a field of a higher number;

VD - go to a field of a smaller number;

TOTAL - save the entered information (only when in "field definition" mode);

STL - alternative shift to "address/field definition" modes;

CRD - print out the entered information or the field entry.

The fields that must be programmed are:

Table 2:

Field 1 /ECR logical number/,

Field 8 /value 1 or 2/,

Field 9 /baudrate/

3 - 4800 bps;

4 - 9600 bps;

Mode R - "Sales":

Enter the mode from "OFF" status by pressing the "1" numeric key and with the operator's password (from number 13~16), and press "TOTAL".

MP-55, MP55M, MP55L



To change the ECRs' configuration, first they need to be cleared.

Clear ECR:

Entering the "Clear" mode is possible when in "OFF" status, after pressing the numeric key "3" and setting the operator's password from number 27 to number 30 (30 for Serbian devices). Then press "TOTAL" twice, which generates a printout of the electronic journal and the daily financial report.

When the electronic journal is already printed, the operator must confirm the clear. The display shows a message "C - 0" - the operator should press the respective key. To confirm the clear, press the "0" key. Pressing "C" cancels the operation.

Programming the fields:

To enter the "Programming" (PGM) mode, set the device in "OFF" status and press the numeric key "4". Set the operator's password from number 29 to number 30 (30 for Serbian devices) and press "TOTAL".

The programming of the memory is selected by pressing the "1" key. All the parameters that can be programmed are arranged in tables. Each table consists of a fixed number of lines and each line consists of fields.

2. 1. 1. 2.

[Table number].[Line number].[Field number].[Number of symbols]

In the programming mode you can set all the parameters that are necessary for the cash register to work properly. With the help of the functional keys (according to their definition) you can go to a field and, using the information keys, set the wanted value. Press "TOTAL" to save the data input.

X - go to the next table. After a table of the highest number follows a table of the smallest number.

%+ - go to a line of a higher number;

%- - go to a line of a smaller number;

PRC - go to a field of a higher number;

VD - go to a field of a smaller number;

TOTAL - save the entered information (only when in "field definition" mode);

STL - alternative shift to "address/field definition" modes;

PY - print out the entered information or the field entry.

The fields that must be programmed are:

Table 2:

Field 1 /ECR logical number/,

Field 8 /3/(note : for MP55L – this value must be „2“)

Field 9 /baudrate/

3 - 4800 bps; (for MP55L value 1 = 4800 bps)

4 - 9600 bps; (for MP55L value 4 = 38400 bps)

Table 4

Field 1, line 1 and line 2 /value 1/ - permits a surcharge/discount in percents.

Mode R - "Sales":

Enter the mode from "OFF" status by pressing the "1" numeric key and with the operator's 1 to 30 password and press "TOTAL".

DP-50, DP-50D



To change the ECRs' configuration, first they need to be cleared.

Clear ECR:

Entering the "Clear" mode is possible when in "OFF" status, after pressing the numeric key "3" and setting the operator's password from number 27 to number 30 (30 for Serbian devices). Then press "TOTAL" twice, which generates a printout of the electronic journal and the daily financial report.

When the electronic journal is already printed, the operator must confirm the clear. The display shows a message "C - 0" - the operator should press the respective key. To confirm the clear, press the "0" key. Pressing "C" cancels the operation.

Programming the fields:

To enter the "Programming" (PGM) mode, set the device in "OFF" status and press the numeric key "4". Set the operator's password from number 29 to number 30 (30 for Serbian devices) and press "TOTAL".

The programming of the memory is selected by pressing the "1" key. All the parameters that can be programmed are arranged in tables. Each table consists of a fixed number of lines and each line consists of fields.

2. 1. 1. 2.

[Table number].[Line number].[Field number].[Number of symbols]

In the programming mode you can set all the parameters that are necessary for the cash register to work properly. With the help of the functional keys (according to their definition) you can go to a field and, using the information keys, set the wanted value. Press "TOTAL" to save the data input.

X - go to the next table. After a table of the highest number follows a table of the smallest number.

%+ - go to a line of a higher number;

%- - go to a line of a smaller number;

PRC - go to a field of a higher number;

VD - go to a field of a smaller number;

TOTAL - save the entered information (only when in "field definition" mode);

STL - alternative shift to "address/field definition" modes;

PY - print out the entered information or the field entry.

The fields that must be programmed are:

Table 2:

Field 1 /ECR logical number/,

Field 8 /3/

Field 9 /baudrate/

1 - 4800 bps;

2 - 9600 bps;

3 – 19 200 bps;

4 – 38 400 bps;

Table 4

Field 1, line 1 and line 2 /value 1/ - permits a surcharge/discount in percents.

Mode R - "Sales":

Enter the mode from "OFF" status by pressing the "1" numeric key and with the operator's 1 to 30 password and press "TOTAL".

MP-500,MP-500T,MP-500TR



Clear ECR:

To enter in "Clear" mode, switch the key to "Z" position, press the "PLU" key and "1" key. To generate a detailed report press "0", and to get a short report press "1". When the report is ready, the operator must confirm the clear. The indication on the display reads "Ñ - 0": "C" cancels the clear, "0" confirms the operation.

Programming the fields:

To enter the "Programming" (PGM) mode, set the key in "PGM" position, only for an ECR with cleared memory. Select programming of the memory by pressing "1" on the numeric keyboard.

Functional keys:

X - go to the next table. After a table of the highest number follows a table of the smallest number.

%+ - go to a line of a higher number;

%- - go to a line of a smaller number;

PRC - go to a field of a higher number;

VD - go to a field of a smaller number;

TOTAL - save the entered information;

SÂTL - alternative shift to "address/field definition" modes;

CÂRD - print out the entered information or the field entry.

The fields that must be programmed are:

Table 2:

Field 1 /ECR logical number/,

Field 8 /value 3/,

Field 9 /baudrate/

3 - 4800 bps;

4 - 9600 bps;

Table 4

Field 1, line 1 and line 2 /value 1/ - permits a surcharge/discount in percents.

Table 5

Field 7 and field 8 /value 0/

Mode R - "Sales":

To enter the mode, you must:

1. Set the key to "REG";
2. Enter the operator's password;
3. Press "TOTAL".

Samsung ER250F



Clear ECR:

To enter into "Clear" mode, switch the key to "Z" position and press "1". Press "0" to generate a detailed report, and "1" to generate a short report. When done, the operator must confirm the clear. The indication on the display will read "Ñ - 0", where "C" cancels the clear and "0" confirms the operation.

Programming the fields:

To enter the "programming mode" (PGM), set the switch key to PGM position, only for a cleared ECR. Select programming of the memory with "1".

Functional keys:

X - go to the next table. After a table of the highest number follows a table of the smallest number.

%+ - go to a line of a higher number;

%- - go to a line of a smaller number;

VD- go to a field of higher number;

TAX- go to a field of a smaller number;

AMD/TEND - save the entered information;

CHECK - alternative shift to "address/field definition" modes;

CHARGE - print the entered information or the field entry.

The fields that must be programmed are:

Table 2:

Field 1/ECR logical number/,

Field 8 /value 6/,

Field 9 /baudrate/.

3 - 4800 bps;

Mode R - "Sales":

To enter the mode you must :

1. Set the key to "REG" position;
2. Enter the operator's password;
3. Press "TOTAL".

Types of errors and order execution result

The input file contains ASCII text commands. Each line consists of only one command. The commands' format is

[command]

, [logical number], [service field], [parameters]

[command]: this field contains one of the following letters: S, T, P, C, I, H, F, Y, D, Z, B;

[logical number]: this is the number saved in table 2, field 1 of the ECR; for FP the field is irrelevant, allowed value is 0~99;

[service field]: consists of 3 sub-fields, each divided by a comma. Every sub-field contains respectively 6, 1 and 2 underlines.

_____?_?_____

In this field FPRINT records the result of the respective command execution. In the first 6-lined field, what is recorded is the ECR or FP serial number. The second 1-line field saves an index from 0 to 9, whose value increases with each successful command. The last 2-lined field indicates whether and how a command has been carried out in the following format:

___ - unprocessed record ;

Depending on what type of answer you have chosen when setting the program (see Settings), the result is either saved in a DOS "FprintWin" compatible format (classical answer) or what is recorded is the error number, if such occurs.

Classical answer :

Er - the command has not been carried out due to an error in field [parameters] or invalid command sequence during work with FP (for example: S, T - payment without closing the receipt, S or S, C, C, or S, Z);

Ok - the command is successful;

Sd - the command has not been carried out; possible reasons: paper is out; the printer was turned off during print; there is a problem with the fiscal memory or the printing device; the FP clock is not set;

No - the respective ECR or FP does not execute this command (not considered as an error);

Error number/result :

0 -Command successful;

1 - Communication error! Make sure the device is working properly and check if it is connected to the computer;

2 - Incorrect command;

3 - The program cannot open COM port No

4 - There is no such device;

5 -Incorrect command syntax;

6 - Non-existent file;

7 - Wrong file structure;

8 - Please, enter the registration key;

9 - Please, enter all the parameters correctly;

10 - Unspecified error.

The numbers 0,1,2,5 and 10 are recorded in the file service field, and the rest can be displayed as program messages.

List of executable commands by devices

MP50, MP55



Executable commands :

S, F, H, C (only on subtotal, i.e. after command *T* containing parameter 4), **P, T, Y, B.**

Example :

```
H,1,_____,__,_;  
S,1,_____,__,_;Cabbage;0.05;1.000;1;1;2;0;0;  
S,1,_____,__,_;Gherkins;0.05;1.000;1;1;2;0;0;  
S,1,_____,__,_;Potatoes;0.02;1.000;1;1;2;0;0;  
S,1,_____,__,_;Printer;0.05;3.000;1;1;2;0;0;  
T,1,_____,__,_;4;;;;;  
C,1,_____,__,_;1;10.00;;;;  
P,1,_____,__,_; ;;;;  
P,1,_____,__,_;Is this a fiscal printer;;;;;  
P,1,_____,__,_;or a cash register?;;;;;  
P,1,_____,__,_; ;;;;  
T,1,_____,__,_;  
Y,1,_____,__,_;Official receipt;;;;;  
P,1,_____,__,_;In the official receipt;;;;;  
P,1,_____,__,_; only P (text print);;;;;  
P,1,_____,__,_;and T (closing of official ;;;;  
P,1,_____,__,_;receipt) commands can be executed. ;;;;  
T,1,_____,__,_;  
F,1,_____,__,_;
```


(For Serbian Devices)

Executable commands : **S, T, C, P, I, H, F**

Example :

H,1,_____,_,_;

S,1,_____,_,_;2;;0.34;3.123,,,,;

C,1,_____,_,_;1;40.00;;;;

S,1,_____,_,_;7;;3.10;3.123,,,,;

P,1,_____,_,_;1111111;22222222;3333333;4444444;555555;

T,1,_____,_,_;4,,,,;

C,1,_____,_,_;0;98.99;;;;

T,1,_____,_,_;4,,,,;

C,1,_____,_,_;1;98.99;;;;

S,1,_____,_,_;2;;0.10;3.005,,,,;

T,1,_____,_,_;1;0.05;;;;

T,1,_____,_,_;2;0.05;;;;

T,1,_____,_,_;3;0.05;;;;

T,1,_____,_,_;

P,1,_____,_,_;test1 ;test2 ;test3 ;test test4 ;test5;

S,1,_____,_,_;2;;0.34;3.123,,,,;

C,1,_____,_,_;1;40.00;;;;

T,1,_____,_,_;

I,1,_____,_,_;0;2.00;;;;

I,1,_____,_,_;1;2.00;;;;

F,1,_____,_,_;

MP5000



Executable commands : **S, C, T, P, Y, D.**

Example :

```
S,1,_____,_____;Cabbage;0.05;1.000;1;1;2;0;0;
S,1,_____,_____;Gherkins;0.05;1.000;1;1;2;0;0;
S,1,_____,_____;Potatoes;0.02;1.000;1;1;2;0;0;
S,1,_____,_____;Printer;0.05;3.000;1;1;2;0;0;
T,1,_____,_____;4;,,,,;
C,1,_____,_____;1;10.00;,,,;
P,1,_____,_____;,,,,;
P,1,_____,_____;Is this a fiscal printer;,,,,;
P,1,_____,_____;or a cash register?;,,,,;
P,1,_____,_____;,,,,;
T,1,_____,_____;
D,1,_____,_____;
Y,1,_____,_____;Official receipt;,,,,;
P,1,_____,_____;In the official receipt;,,,,;
P,1,_____,_____; only P (text print);,,,,;
P,1,_____,_____;and T (closing of official ;,,,,;
P,1,_____,_____;receipt) commands can be executed. ;,,,,;
T,1,_____,_____;
```

MP500, MP500T, MP500TR



Executable commands : **S, T, C, P, I**

Example :

```
S,1,_____,_____;Cabbage;0.05;1.000;1;1;2;0;0;
S,1,_____,_____;Gherkins;0.05;1.000;1;1;2;0;0;
C,1,_____,_____;0;10.00;,,,
S,1,_____,_____;Potatoes;0.02;1.000;1;1;2;0;0;
S,1,_____,_____;Printer;0.05;3.000;1;1;2;0;0;
T,1,_____,_____;4;,,,,
C,1,_____,_____;1;10.00;,,,
P,1,_____,_____;,,,,
P,1,_____,_____;Is this a fiscal printer;,,,
P,1,_____,_____;or a cash register?;,,,
P,1,_____,_____;,,,,
T,1,_____,_____;
I,1,_____,_____;0;1.5;,,,
I,1,_____,_____;1;1.5;,,,
```

(For Serbian Devices)

Executable commands : **S, T, C, P, I, H, F**

Example :

```
H,1,_____,_____;
S,1,_____,_____;2;;0.34;3.123;,,,,;
C,1,_____,_____;1;40.00;,,,
S,1,_____,_____;7;;3.10;3.123;,,,,;
P,1,_____,_____;1111111;22222222;3333333;444444;555555;
```

T,1,_____,_,_;4;;;;;

C,1,_____,_,_;0;98.99;;;;

T,1,_____,_,_;4;;;;;

C,1,_____,_,_;1;98.99;;;;

S,1,_____,_,_;2;;0.10;3.005;;;;;

T,1,_____,_,_;1;0.05;;;;

T,1,_____,_,_;2;0.05;;;;

T,1,_____,_,_;3;0.05;;;;

T,1,_____,_,_;

P,1,_____,_,_;test1 ;test2 ;test3 ;test4 ;test5 ;

S,1,_____,_,_;2;;0.34;3.123;;;;;

C,1,_____,_,_;1;40.00;;;;

T,1,_____,_,_;

I,1,_____,_,_;0;2.00;;;;

I,1,_____,_,_;1;2.00;;;;

F,1,_____,_,_;

MP55M, DP-50, DP-50D



Executable commands: **S, F, H, C, P, T** .

Example:

```
H,1,_____,_,_;  
S,1,_____,_,_;Cabbage;0.07;1.452;1;1;2;0;0;  
C,1,_____,_,_;0;10.00;;;  
P,1,_____,_,_; ;;;;  
S,1,_____,_,_;Gherkins;0.05;1.000;1;1;2;0;0;  
P,1,_____,_,_; ;;;;  
S,1,_____,_,_;Potatoes;0.02;1.321;1;1;2;0;0;  
C,1,_____,_,_;1;10.00;;;  
P,1,_____,_,_; ;;;;  
S,1,_____,_,_;Printer;0.05;3.227;1;1;2;0;0;  
P,1,_____,_,_; ;;;;  
T,1,_____,_,_;4; ;;;;  
C,1,_____,_,_;1;10.00;;;  
P,1,_____,_,_; ;;;;  
P,1,_____,_,_;Is this a fiscal printer; ;;;;  
P,1,_____,_,_;or a cash register?; ;;;;  
P,1,_____,_,_; ;;;;  
T,1,_____,_,_;  
F,1,_____,_,_;
```

FP3530, FP550F, FP550F-40, FP300, FP300-Ke, FP1000



Executable commands : S, C, T, I, P, Y, Z, D, E.

Example :

```
S,1,_____,____;Cabbage;0.05;1.000;1;1;2;0;0;
S,1,_____,____;Gherkins;0.05;1.000;1;1;2;0;0;
S,1,_____,____;Potatoes;0.02;1.000;1;1;2;0;0;
S,1,_____,____;Printer;0.05;3.000;1;1;2;0;0;
T,1,_____,____;4;,,,,;
C,1,_____,____;1;10.00;,,,,;
P,1,_____,____;,,,,;
P,1,_____,____;Is this a fiscal printer;,,,,;
P,1,_____,____;or a cash register?;,,,,;
P,1,_____,____;,,,,;
T,1,_____,____;
D,1,_____,____;
I,1,_____,____;0;1.5;,,,,;
I,1,_____,____;1;1.5;,,,,;
Y,1,_____,____;Official receipt;,,,,;
P,1,_____,____;In the official receipt;,,,,;
P,1,_____,____; only P (text print);,,,,;
P,1,_____,____;and T (closing of official ;,,,,;
P,1,_____,____;receipt) commands can be executed. ;,,,,;
T,1,_____,____;

Z,1,_____,____; (as a single line in file)
```

(For Serbian Devices)

Example :

P,1,_____,_____;Print,in; Fiscal;check;;;
S,1,_____,_____;2;;;1;1;2;0;0;
C,1,_____,_____;1;20.00;;;;
S,1,_____,_____;2;;;3.000;1;1;2;0;0;
C,1,_____,_____;0;20.00;;;;
T,1,_____,_____;4;;;;
C,1,_____,_____;1;15.00;;;;
S,1,_____,_____;2;;2.45;1.000;1;1;1;0;0;
S,1,_____,_____;2;;1.32;1.000;1;1;1;0;0;
T,1,_____,_____;4;;;;
C,1,_____,_____;0;15.00;;;;
T,1,_____,_____;0;0.01;;;;
T,1,_____,_____;1;0.02;;;;
T,1,_____,_____;2;0.03;;;;
T,1,_____,_____;3;0.04;;;;
T,1,_____,_____;;;;;;
Y,1,_____,_____;;;;;;
P,1,_____,_____;Print,in;non;fiscal;check;;
P,1,_____,_____; !"#\$%&'()*+,-.
/;0123456789;<=>?@ABCDEFGHIJK;LMNOPQRSTUVWXYZ[\]^_`abcdefghijklmnopqrstuvwxyz;
P,1,_____,_____;qrstuvwxyz{|}~ €;Š Œ;Ž □ □;š œ ž Ÿ; ;
P,1,_____,_____;À Á Â Ã Ä Å Æ Ç È É Ê Ë Ì Í Î Ï Ð Ñ Ò Ó Ô Õ Ö × Ø; ;à á â ã ä å æ ç è é ê ë;í î ï ð ñ ò ó ô õ ö ÷ ø;;
T,1,_____,_____;;;;;;
I,1,_____,_____;0;1.11;;;;
I,1,_____,_____;1;2.22;;;;
D,1,_____,_____;;;;;;

Z,1,_____,_____;;;;;; (as a single line in file)

Samsung ER-250F.



Executable commands : **S, T**

Example:

S,1,_____,_,_;Cabbage;0.05;1.000;1;1;2;0;0;

S,1,_____,_,_;Gherkins;0.05;1.000;1;1;2;0;0;

S,1,_____,_,_;Potatoes;0.02;1.000;1;1;2;0;0;

S,1,_____,_,_;Printer;0.05;3.000;1;1;2;0;0;

T,1,_____,_,_;

Contact information and technical support

E-mail :

sales@datecs.bg

cvetanov@datecs.bg

Web : <http://www.datecs.bg>